

## Gas Chromatography Mass Spectrometry (GC-MS)

### Sample Requirement :-

1. Solid Sample - 1 gm.
2. Liquid Sample - 10 ml.



Agilent Technologies GC 7890B - MS 5977A

### Applications :-

1. Perfumery Formulations .
2. Unknown Organic Identification With All Libraries .

#### CONTACT US

Send your Enquiries



**- DR. KETAN MERCHANT [ MSc., Ph.D - ICT ]**

[saslab21@gmail.com](mailto:saslab21@gmail.com)

[info@saslabindia.com](mailto:info@saslabindia.com)



[www.saslabindia.com](http://www.saslabindia.com)



+91 8850413449

+91 022 2500 0386

+91 022 2500 0186

+91 022 4215 0502

Area Percent Report

Data Path : D:\AGILENT-26-3-16\2020\JULY 2020\

Acq On : 25 Jul 2020 21:25  
Operator : SAS

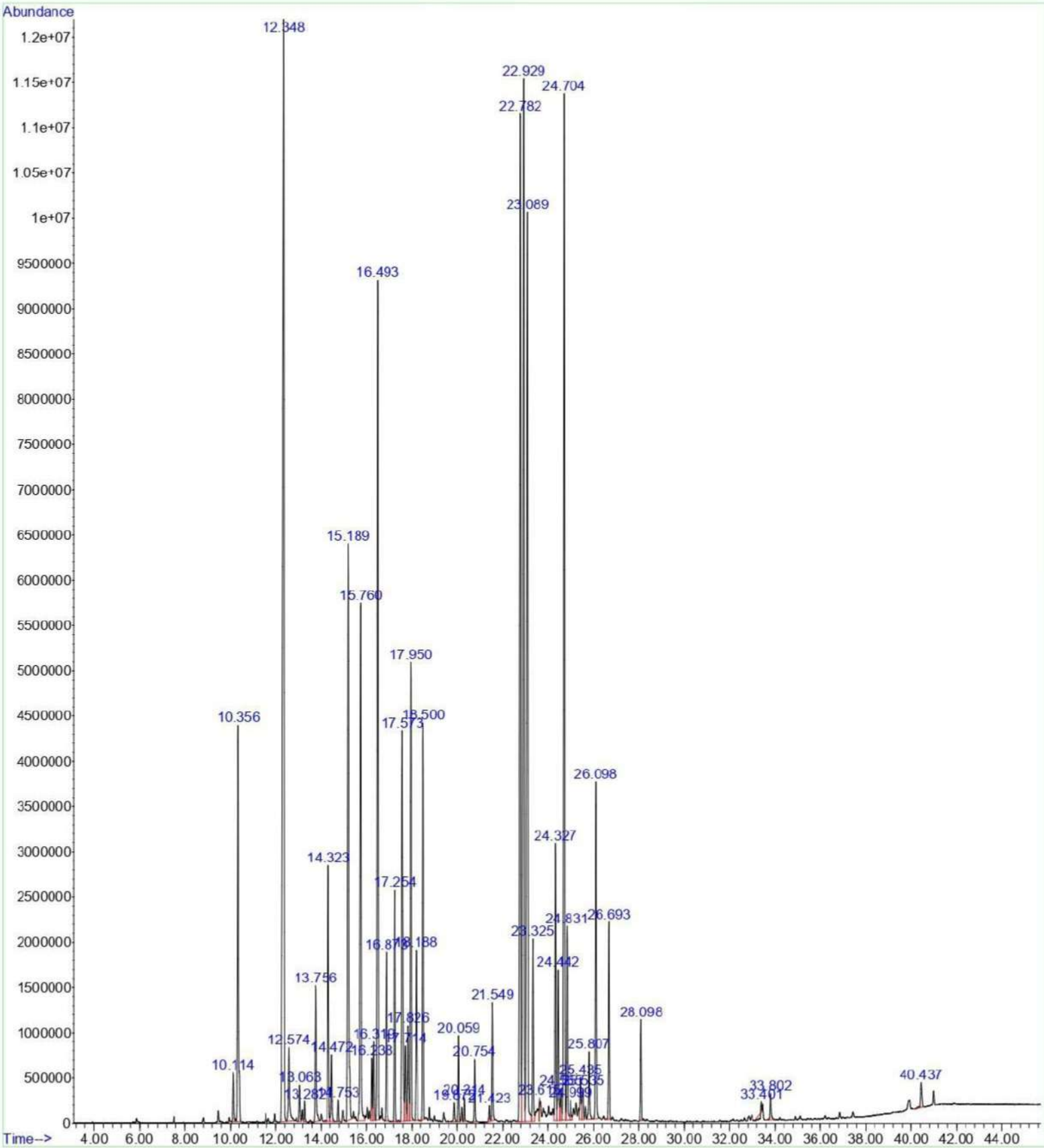
Misc :  
ALS Vial : 1 Sample Multiplier: 1

Integration Parameters: autoint1.e  
Integrator: ChemStation

peak #	R.T. min	first scan	max scan	last scan	PK TY	peak height	corr. area	corr. % max.	% of total
1	10.114	989	1004	1017	BV	529990	14518089	2.61%	0.324%
2	10.356	1028	1038	1062	VB	4348291	130725545	23.54%	2.919%
3	12.348	1297	1323	1341	BV	12163473	555353998	100.00%	12.399%
4	12.574	1341	1355	1390	VB	811923	28876375	5.20%	0.645%
5	13.063	1415	1425	1435	BV 3	397752	11889758	2.14%	0.265%
6	13.282	1449	1456	1471	VB	225235	6028369	1.09%	0.135%
7	13.756	1511	1524	1551	BV	1484754	45500592	8.19%	1.016%
8	14.323	1574	1605	1615	BV	2797818	75231392	13.55%	1.680%
9	14.472	1615	1626	1648	VB	734595	22631209	4.08%	0.505%
10	14.753	1652	1666	1681	BB	241736	6671226	1.20%	0.149%
11	15.189	1715	1728	1754	BV 4	6310365	228245740	41.10%	5.096%
12	15.760	1783	1810	1835	BV	5714915	193782067	34.89%	4.326%
13	16.238	1870	1878	1884	VV 2	679447	18300524	3.30%	0.409%
14	16.319	1884	1890	1901	VV 2	859581	25706771	4.63%	0.574%
15	16.493	1901	1915	1925	PV	9220257	274170549	49.37%	6.121%
16	16.873	1951	1969	1988	BB	1856074	48170305	8.67%	1.075%
17	17.254	2013	2023	2039	BB	2519564	64326636	11.58%	1.436%
18	17.573	2040	2069	2083	BV	4299812	150115118	27.03%	3.351%
19	17.714	2083	2089	2098	VV 3	828737	27126023	4.88%	0.606%
20	17.826	2098	2105	2114	VV	1050355	34553602	6.22%	0.771%
21	17.950	2114	2123	2145	VB	5014320	136351398	24.55%	3.044%
22	18.188	2145	2157	2186	BB 2	1859925	58899805	10.61%	1.315%
23	18.500	2186	2201	2216	BV	4343459	112800560	20.31%	2.518%
24	19.872	2383	2397	2414	BV	202549	6502832	1.17%	0.145%
25	20.059	2414	2424	2435	PV	957003	24527469	4.42%	0.548%
26	20.314	2452	2460	2469	PB 2	258184	6472094	1.17%	0.144%
27	20.754	2505	2523	2541	BB	683980	18729394	3.37%	0.418%
28	21.423	2606	2619	2627	BV 2	170005	4963924	0.89%	0.111%
29	21.549	2627	2637	2658	VB	1290805	36305164	6.54%	0.811%
30	22.782	2789	2813	2820	BV	11169900	363830364	65.51%	8.123%
31	22.929	2820	2834	2842	VV	11543110	440811367	79.37%	9.842%
32	23.089	2842	2857	2881	VV	10034491	401792259	72.35%	8.970%
33	23.325	2881	2890	2902	VV	1988032	55864079	10.06%	1.247%
34	23.615	2926	2932	2937	VV 2	259104	8547777	1.54%	0.191%
35	24.327	3024	3033	3042	VV	3027503	86589621	15.59%	1.933%
36	24.442	3042	3050	3060	VV	1664895	49422486	8.90%	1.103%
37	24.565	3060	3067	3074	VV 2	349405	12362230	2.23%	0.276%
38	24.704	3074	3087	3097	VV	11267559	358948895	64.63%	8.014%
39	24.831	3097	3105	3123	VV 2	2111767	61003395	10.98%	1.362%
40	24.999	3123	3129	3141	VV	216472	7386493	1.33%	0.165%
41	25.435	3184	3192	3199	VV	460423	16616679	2.99%	0.371%
42	25.535	3199	3206	3215	VV 2	342671	13341984	2.40%	0.298%
43	25.807	3230	3245	3269	VV	740790	23268404	4.19%	0.519%
44	26.098	3269	3286	3313	PB	3677130	105204971	18.94%	2.349%
45	26.693	3352	3371	3385	BV	2151858	58473186	10.53%	1.305%
46	28.098	3552	3572	3582	BV	1120698	29274522	5.27%	0.654%

47	33.401	4289	4329	4334	BV	108542	-2714388	-0.49%	-0.061%
48	33.802	4368	4387	4412	BB	289958	9487164	1.71%	0.212%
49	40.437	5299	5334	5352	BB 2	275066	12077213	2.17%	0.270%

Sum of corrected areas: 4479065230



## Library Search Report

Data Path : D:\AGILENT-26-3-16\2020\JULY 2020\

Acq On : 25 Jul 2020 21:25  
Operator : SASMisc :  
ALS Vial : 1 Sample Multiplier: 1

Search Libraries: C:\Database Minimum Quality: 90

Unknown Spectrum: Apex  
Integration Events: ChemStation Integrator - autoint1.e

PK#	RT	Area%	Library/ID	Ref#	CAS#	Qual
1	10.110	0.34	C:\Database			
			Acetic acid, hexyl ester	20874	000142-92-7	90
			Acetic acid, hexyl ester	20868	000142-92-7	90
			Acetic acid, hexyl ester	20870	000142-92-7	78
			Acetic acid, hexyl ester	20872	000142-92-7	72
			Acetic acid, heptyl ester	30210	000112-06-1	59
			Formic acid, 2-methylpentyl ester	13505	381670-34-4	53
			Acetic acid, heptyl ester	30211	000112-06-1	50
			Acetic acid, octyl ester	39504	000112-14-1	50
			Acetic acid, heptyl ester	30206	000112-06-1	50
			1-Pentene, 2-methyl-	1478	000763-29-1	49
			Acetic acid, hexyl ester	20871	000142-92-7	47
			1-Pentene, 2-methyl-	1487	000763-29-1	43
			Formic acid, hexyl ester	13438	000629-33-4	38
			Cyclohexane	1455	000110-82-7	38
			Acetic acid, hexyl ester	20873	000142-92-7	38
			Hexane, 1,1'-oxybis-	50331	000112-58-3	38
			Cyclohexane	1456	000110-82-7	37
			Hexyl chloroformate	34017	006092-54-2	32
			1-Pentene, 2-methyl-	1488	000763-29-1	32
			Acetic acid, butyl ester	8119	000123-86-4	28
2	10.355	2.60	C:\Database			
			D-Limonene	15682	005989-27-5	99
			D-Limonene	15678	005989-27-5	94
			D-Limonene	15681	005989-27-5	94
			Limonene	15667	000138-86-3	91
			Limonene	15668	000138-86-3	91
			D-Limonene	15680	005989-27-5	89
			Limonene	15669	000138-86-3	76
			Cyclohexene, 1-methyl-4-(1-methyle thienyl)-, (S)-	15879	005989-54-8	76
			Cyclohexene, 4-ethenyl-1,4-dimethy l-	15803	001743-61-9	70
			Limonene	15663	000138-86-3	62
			Limonene	15670	000138-86-3	62
			1,5-Cyclooctadiene, 1,5-dimethyl-	15788	003760-14-3	55
			1,5-Cyclooctadiene, 1,5-dimethyl-	15775	003760-14-3	53
			Cyclohexene, 1-methyl-5-(1-methyle thienyl)-, (R)-	15881	001461-27-4	52
			Cyclohexene, 1-methyl-5-(1-methyle thienyl)- (1R)-2,6,6-Trimethylbicyclo[3.1.1] hept-2-ene	15836	013898-73-2	50
			(1R)-2,6,6-Trimethylbicyclo[3.1.1] hept-2-ene	15854	007785-70-8	42
			Cyclohexene, 5-methyl-3-(1-methyle thienyl)-, trans(-)-	15899	056816-08-1	41
			Bicyclo[2.2.1]heptane, 7,7-dimethy l-2-methylene-	15886	000471-84-1	38
			Bicyclo[2.2.1]heptane, 7,7-dimethy l-2-methylene-	15888	000471-84-1	38
			(1R)-2,6,6-Trimethylbicyclo[3.1.1] hept-2-ene	15852	007785-70-8	30
3	10.411	0.31	C:\Database			
			Eucalyptol	26615	000470-82-6	99
			Eucalyptol	26624	000470-82-6	96
			Eucalyptol	26622	000470-82-6	93
			Eucalyptol	26625	000470-82-6	86
			Eucalyptol	26623	000470-82-6	58
			Trifluoroacetyl-.alpha.-terpineol	101946	1000058-17-6	58
			Phenol, 3,4-dimethoxy-	27409	002033-89-8	30
			Cyclohexene, 4-methyl-	2872	000591-47-9	25
			Octahydro-1H-pyrido(1,2-c)pyrimidi n-1-one	27517	015932-63-5	20

Library Search Report

Data Path : D:\AGILENT-26-3-16\2020\JULY 2020\

Acq On : 25 Jul 2020 21:25

Operator : SAS

Misc :

ALS Vial : 1 Sample Multiplier: 1

Search Libraries: C:\Database

Minimum Quality: 90

Unknown Spectrum: Apex

Integration Events: ChemStation Integrator - autoint1.e

